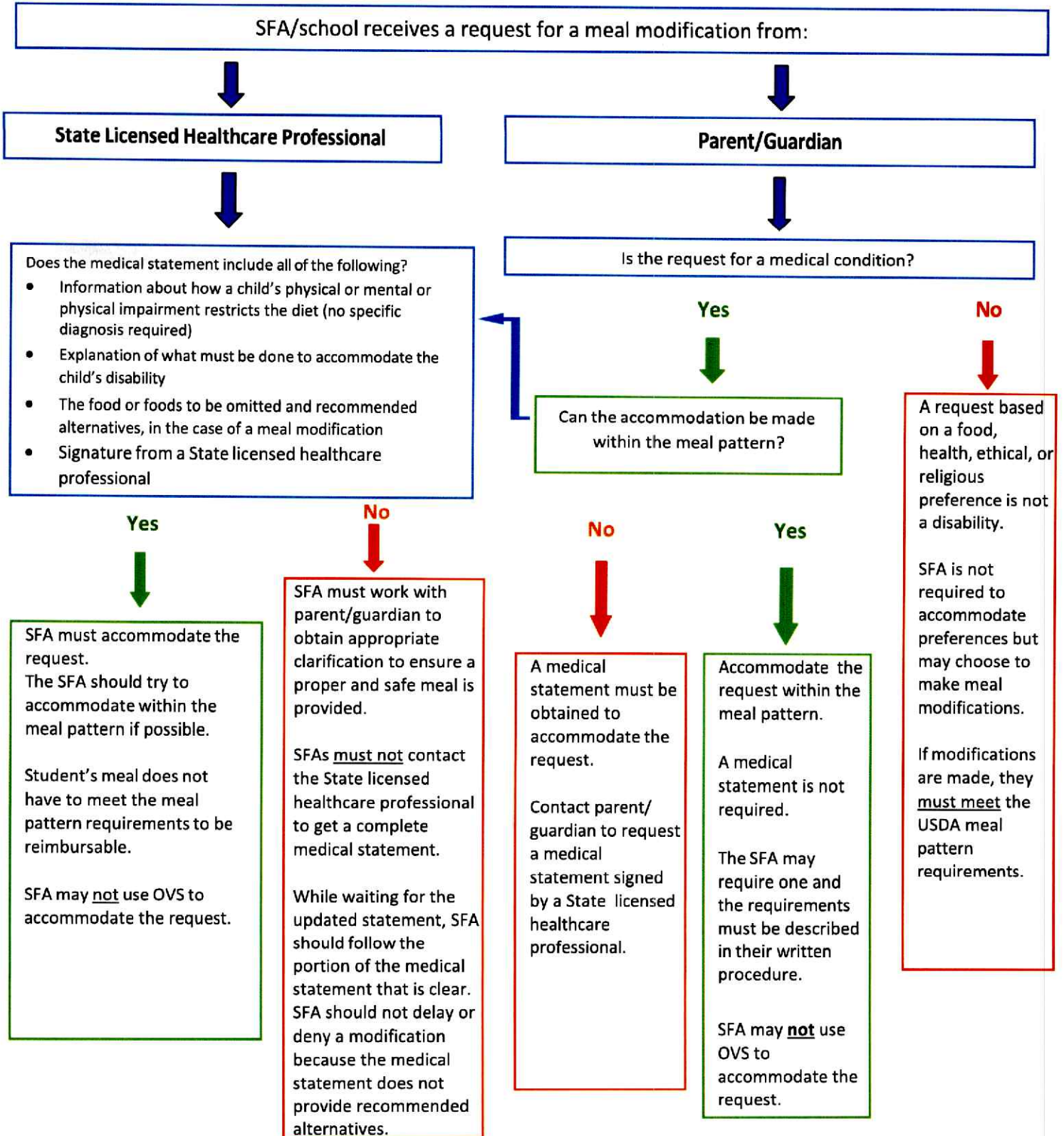


# Accommodating Special Dietary Needs in the School Nutrition Program

This flow chart describes the SFA process for handling requests for modifications.



## Citations and References:

- [P 40-2017 2017 Edition Disability Manual \(azureedge.us\)](https://www.azureedge.us)
- [Accommodating Disabilities in the School Meal Programs: Guidance and Q&As | Food and Nutrition Service \(usda.gov\)](https://www.usda.gov/food-nutrition-service/guidance-and-qas)
- [Modifications to Accommodate Disabilities in the School Meal Programs | Food and Nutrition Service \(usda.gov\)](https://www.usda.gov/food-nutrition-service/modifications-to-accommodate-disabilities)

It is recommended, but not required, that the diet prescription be renewed annually.

This institution is an equal opportunity provider.